

Tract 1A
20 Acres

Tract 1B
20 Acres

Patoka

31

31

TRACT 9
30 Acres

(207)

3
4

28

TRACT 8
37.76 Acres



An aerial photograph showing a large, irregularly shaped tract of land outlined in red. The tract is densely wooded and appears to be a hillside. To the left of the tract, there are several buildings and a road. A white text box is overlaid on the upper-left portion of the red-outlined area.

TRACT 7
25.89 Acres



Tract 7

36

600



Tract 7

Image IndianaMap Framework Data
© 2011 Google

38°15'01.26" N 88°28'12.38" W elev. 606 ft

TRACT 6
18.86 Acres

Sterling

10

TRACT 6
18.86 Acres

Starling

10

3077

3078

3079



TRACT 3
14 Acres

TRACT 5
13 Acres

TRACT 4
13 Acres

Fairview Rd

6

103

P

RED HILL

Tract 1A
20 Acres

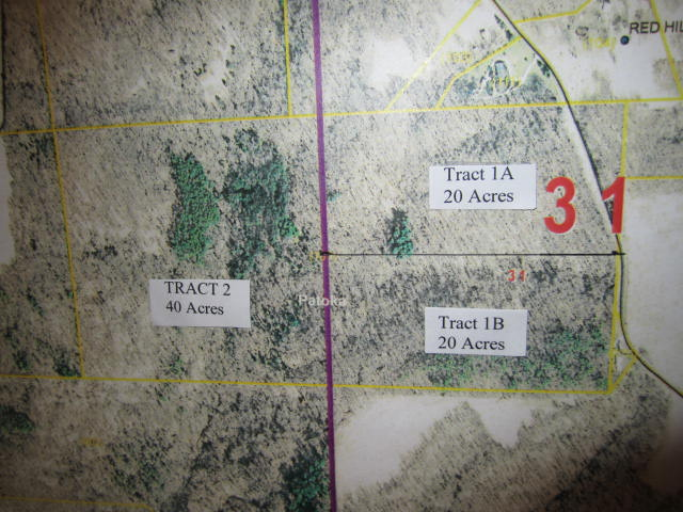
31


TRACT 2
40 Acres

Patoka

Tract 1B
20 Acres

31



An aerial photograph showing a large, irregularly shaped tract of land. The tract is outlined in yellow. A purple line, likely a road or canal, runs vertically along the right side of the tract and is labeled "Patoka". A white rectangular label is placed in the center of the tract, containing the text "TRACT 2" and "40 Acres". The terrain is a mix of brown and green, suggesting a mix of bare earth and vegetation. A black line points from the "Patoka" label to the purple line.

TRACT 2
40 Acres

Patoka

3 4

TRACT 10
35 Acres

3